

## Lesson 22

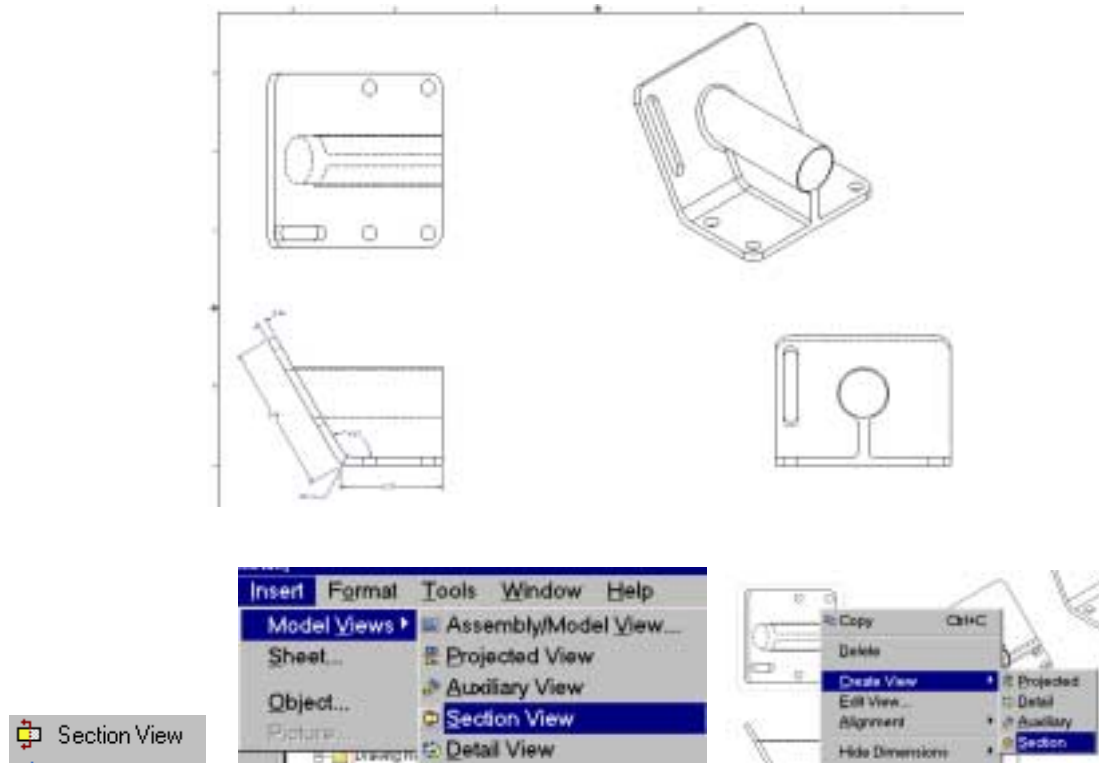
### SectionViews

#### Learning Objective

At the conclusion of this lesson, the user will be able to create section views.

We can use the bracket created in Lesson 17.

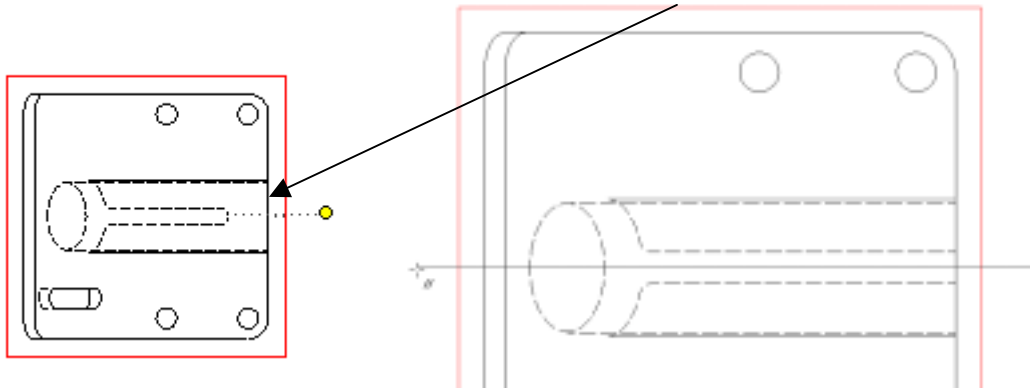
Open a new drawing file using the lesson17.ipt file. Create the basic orthogonal views as shown.



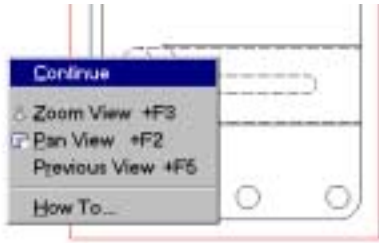
#### Creating a Section View

To create a section view, the user can:

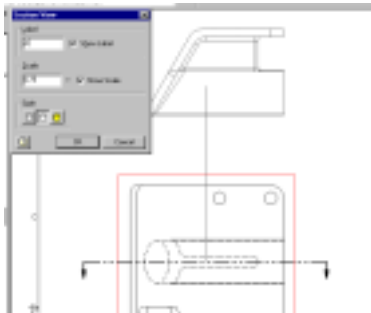
- ◆ Select the SectionView tool from the Drawing Management tools.
- ◆ Select the view to be used for the section, right click and select Create View->Section
- ◆ Go to Insert->Model Views->Section View from the menu.



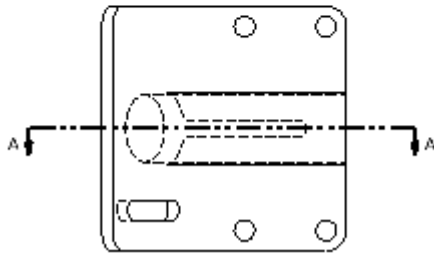
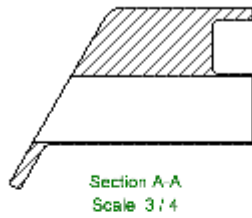
Use Object Tracking to assist in creating the section line. Pick a point to the right of the view. Then drag the mouse to the left side. Use the cursor cues to assist you in keeping the line straight. Pick a point to the left of the view.



Right click and select 'Continue'.



Drag the mouse to where you want to place the view. Pick to place the view.



**TIP:** To get a straight line as shown, just draw a straight line using the object tracking. Inventor will add the shoulders, arrowheads and labels automatically.

To move the View Label, select with the mouse and then drag and place with the mouse.



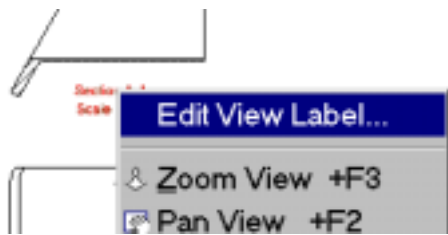
## Editing a Section View

To edit the view:

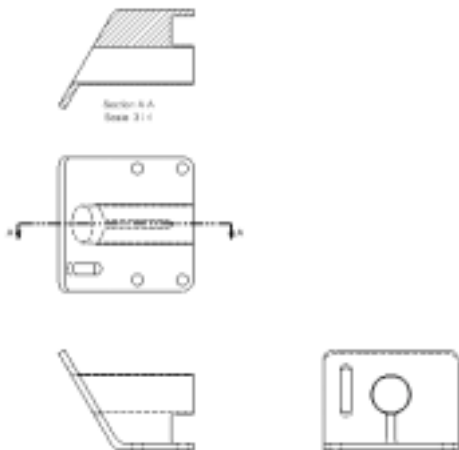
- ◆ Select the view, right click and select 'Edit View'
- ◆ Select the view in the browser, right click and select 'Edit View'



The Edit View dialog box appears.



To edit the View Label, select, right-click and select 'Edit View Label'.



Our completed drawing.  
Save the drawing as 'section1.idw'.